

ÑFX

ÑE

Ñ

É

' à 70%
‡ 2% d' = N

*

,

- . . / #

- . . /

!

Farmington River 5

&

)

\$

6/7

8#

Still River BA 

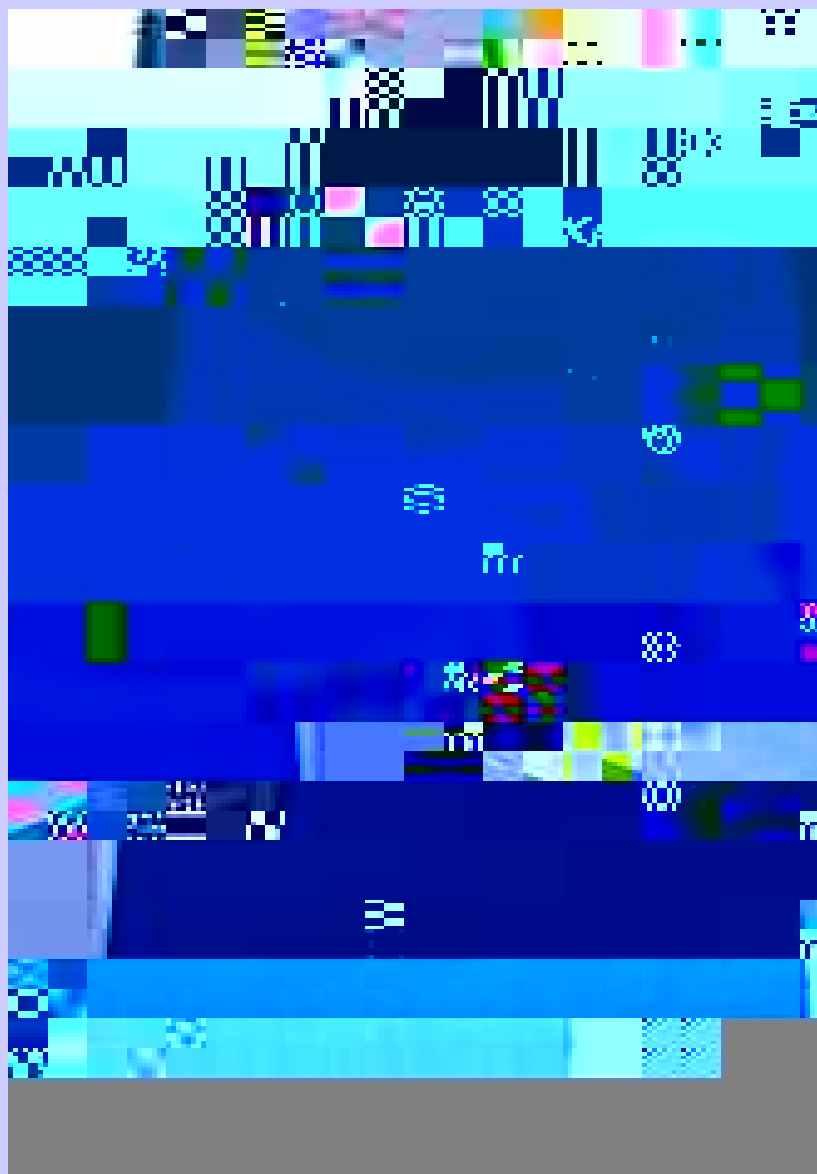


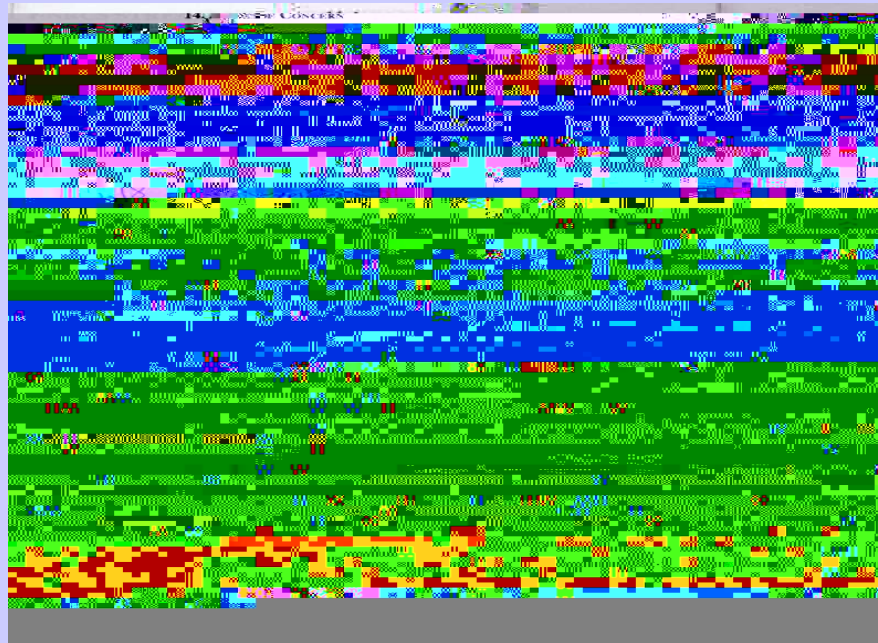
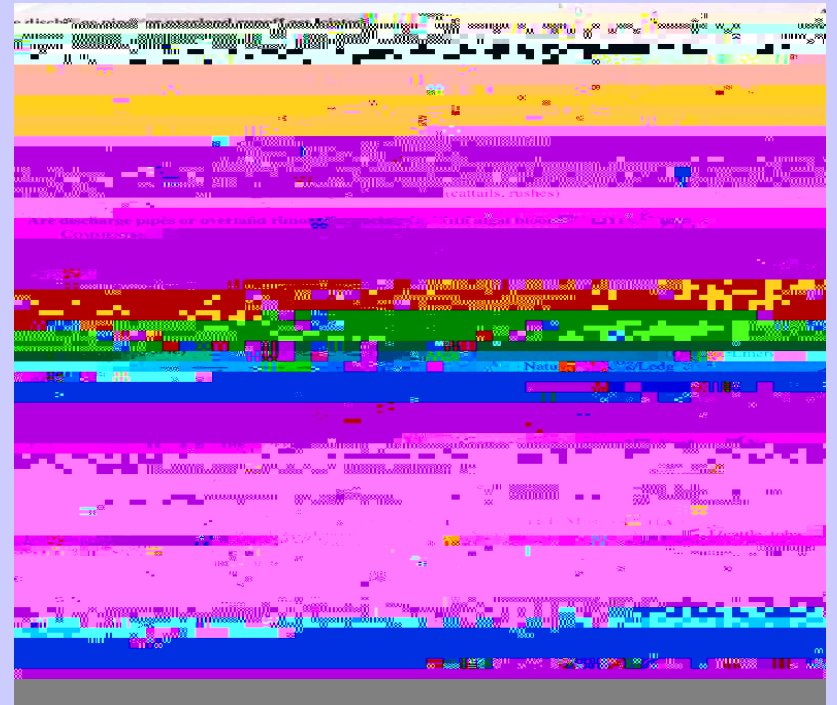
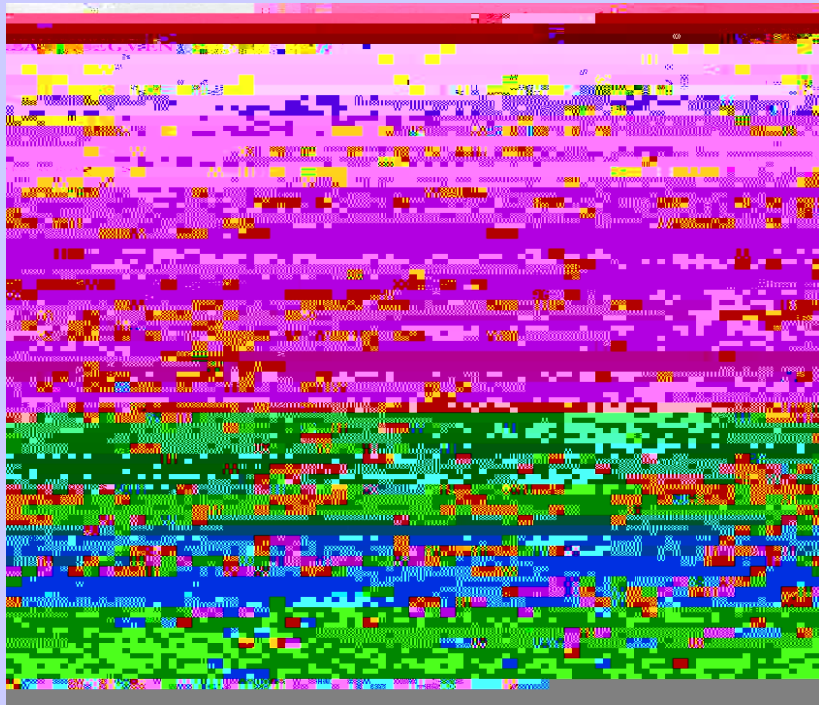
%

(

;

!





!

!

!

(

Concerns

,

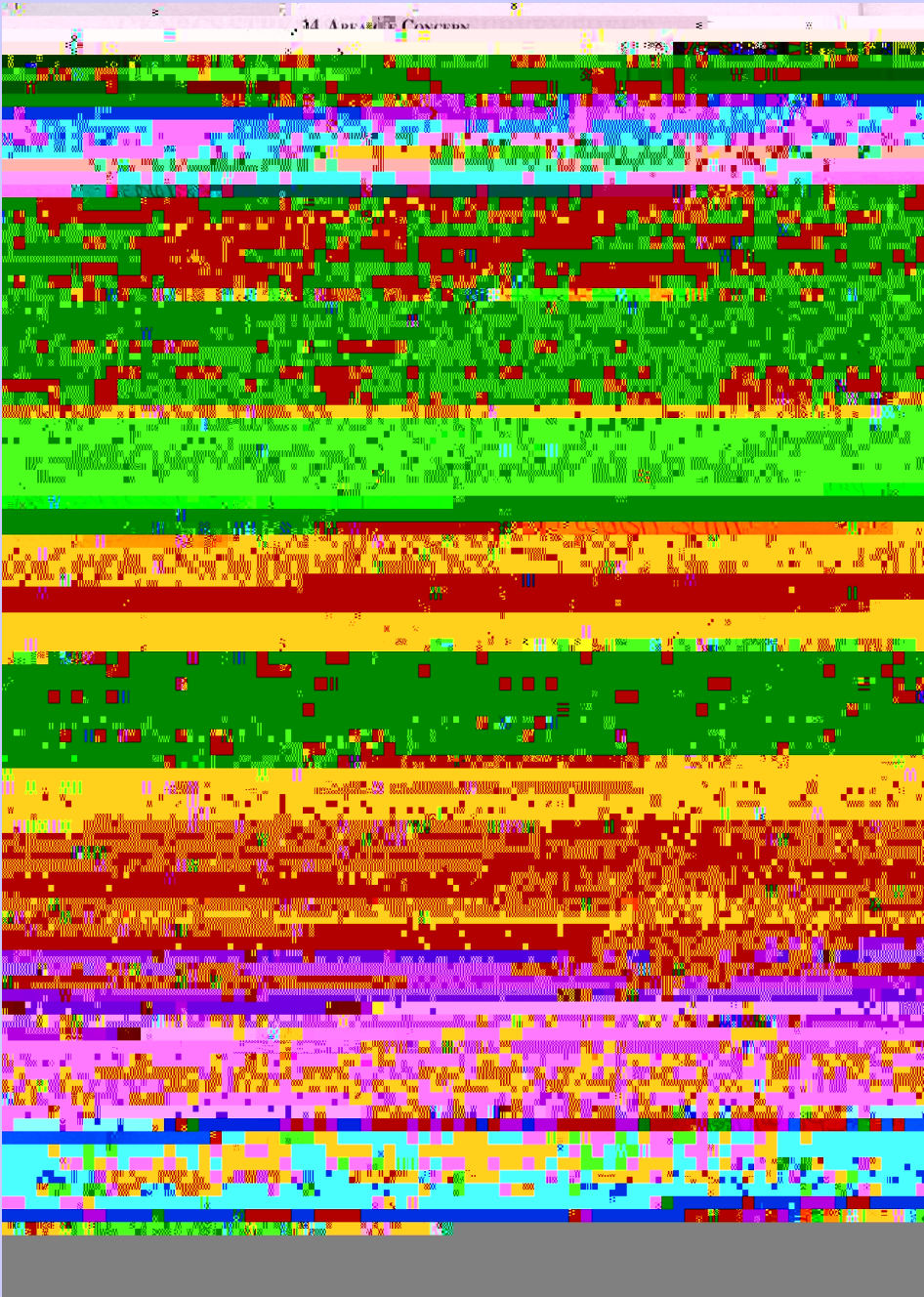
#

)

&

(

#



(" 2000.7

)

Q 20

)

*

!

5

"

<

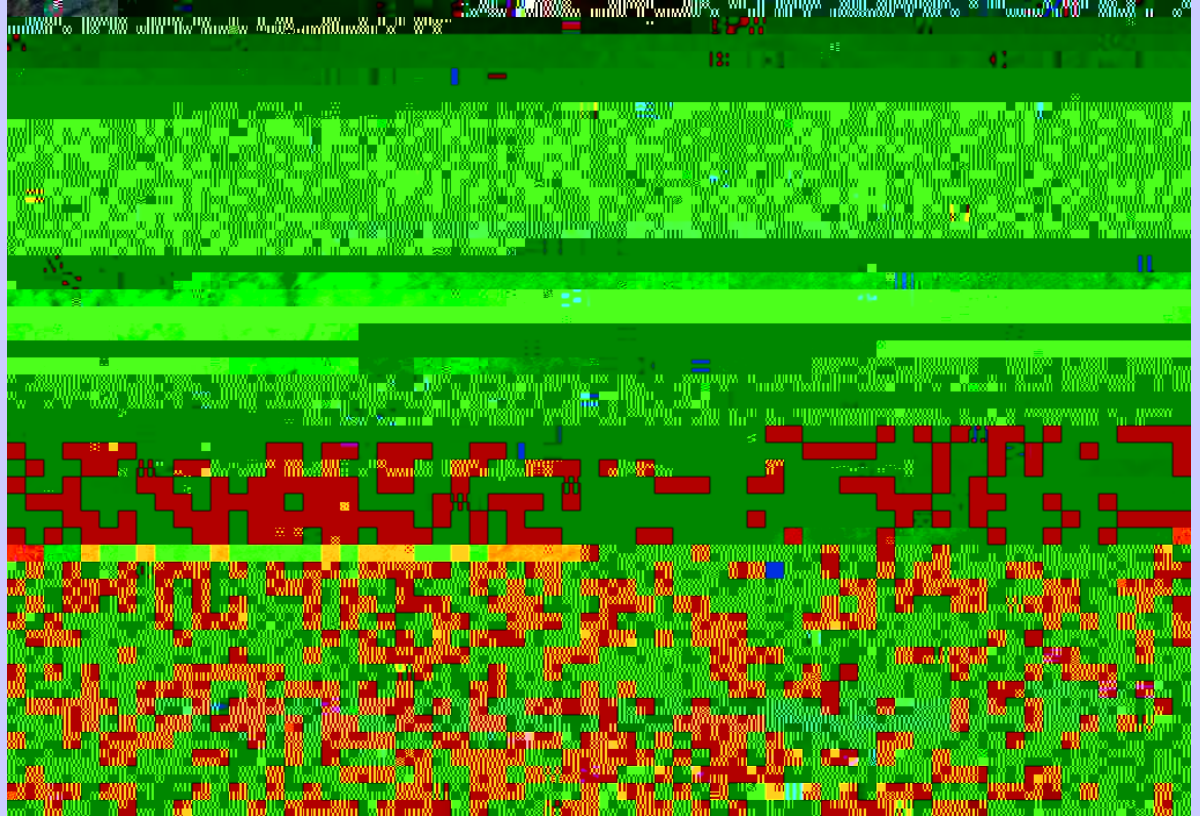
<

\$

'

'

&



"

(

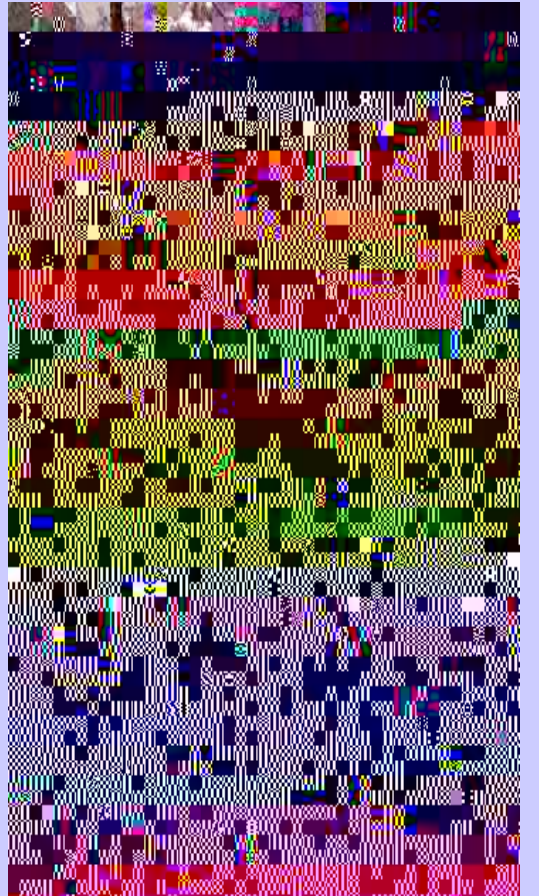


)

)

)

"



- . . /
Farmington River

!

! "

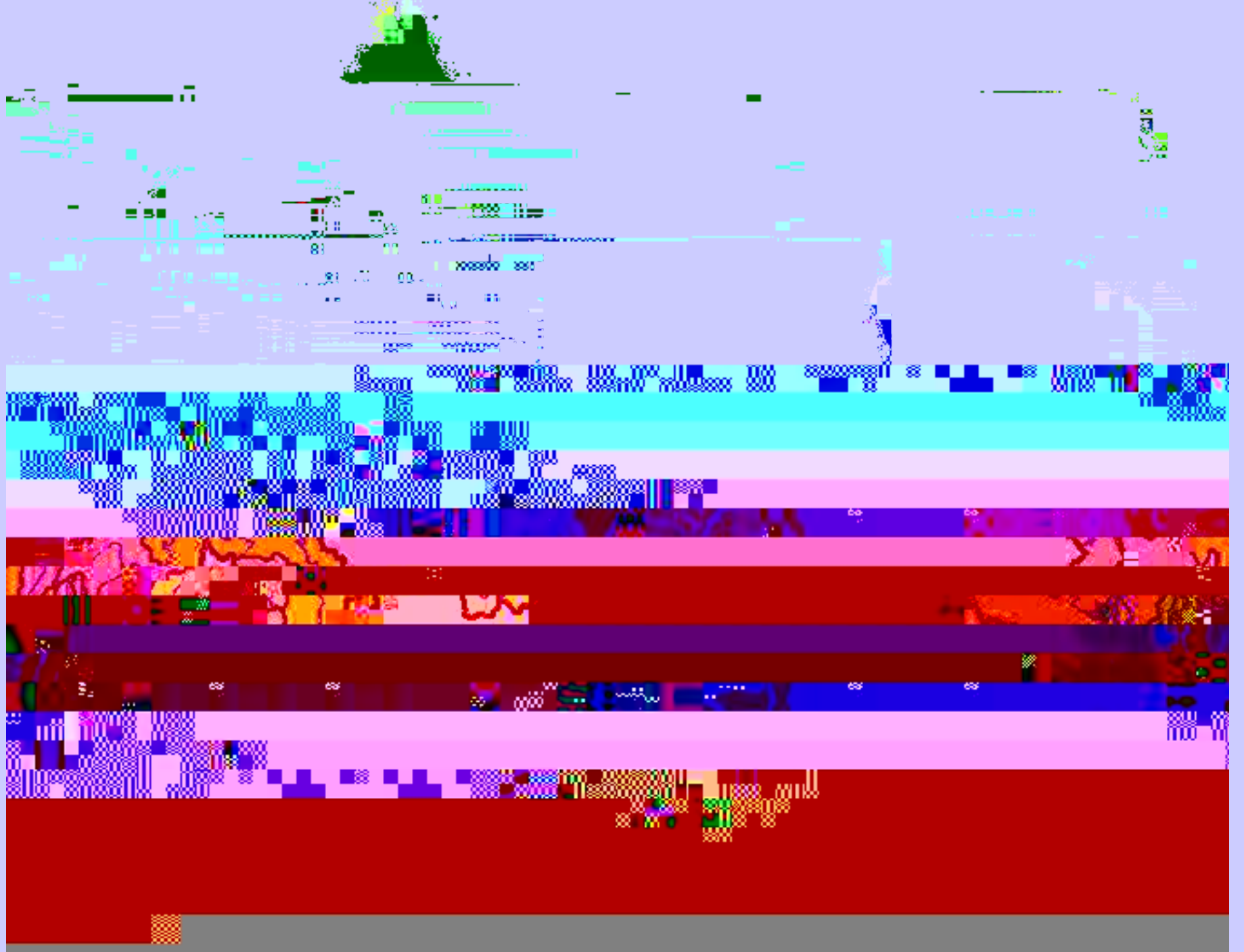
! #

\$%&

'(

Still

~
QSPt(





!

”

- . . /

'

Farmington River 5

&

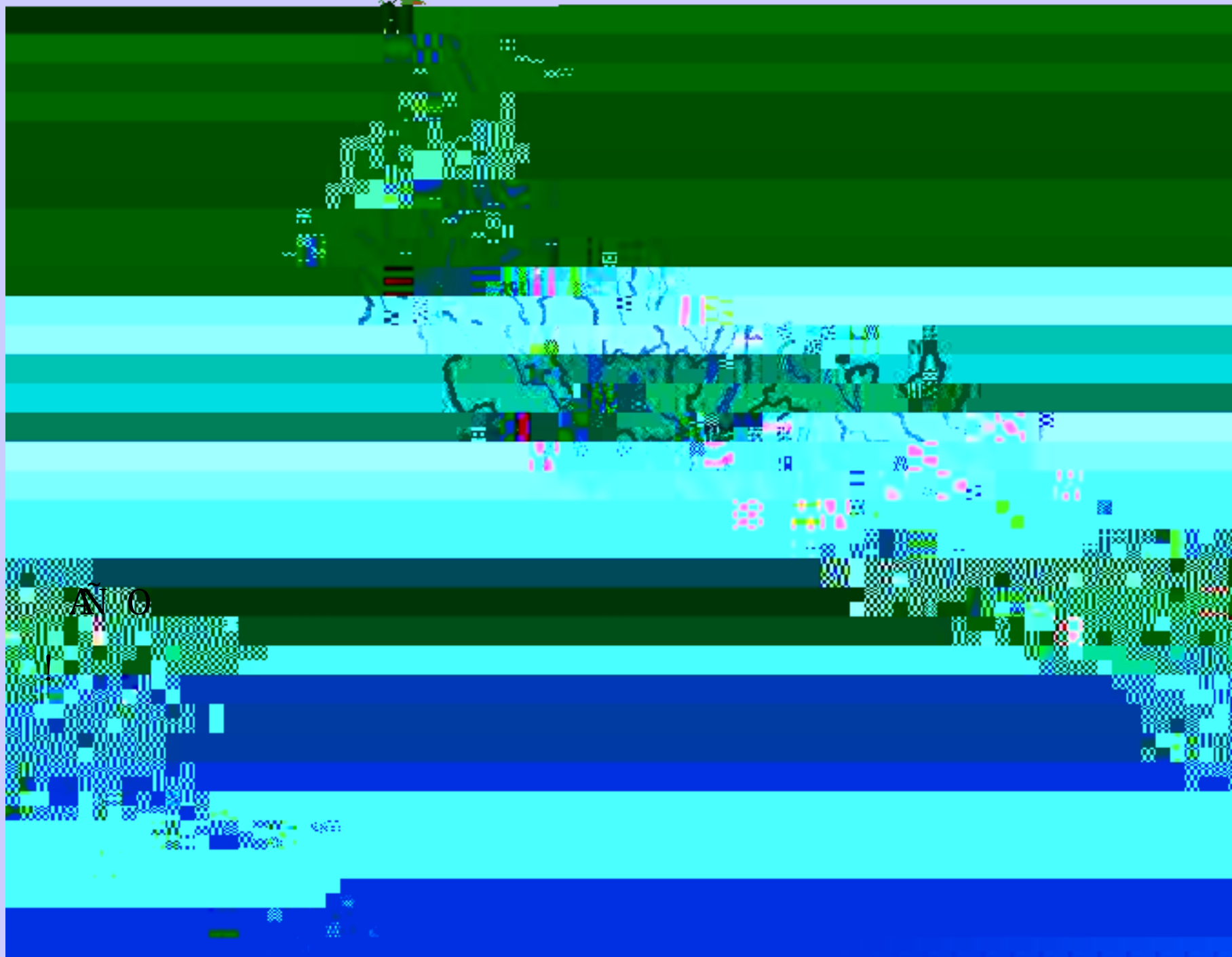
) \$

6/7 D

”



!!



B < ' !

$B < \cdot$

DiuBF



1 # Đ

\$

1

1 Ñ Đ

‰



9

<

'

(

<

'

9 < ' (

< ' !

< = \$ &

- . . /

'

Farmington River 5

&

) \$

6/7 8#

Still River \$

+

(

& ' 674 8#

Nod Brook

&

(

62

8#

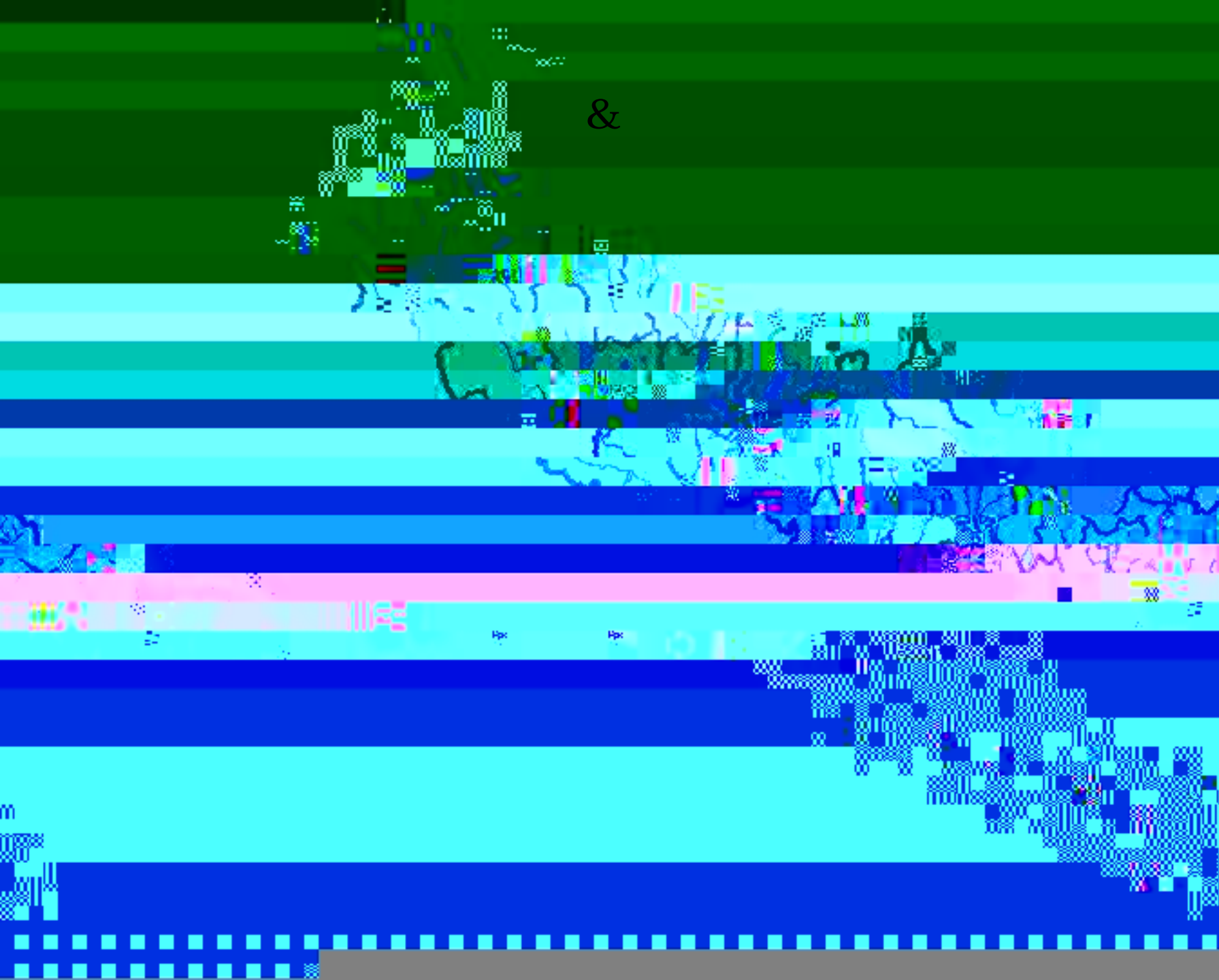
Hop Brook (Stratton Brook

&

62

8#\$

West Branc



>

<

5

<

'

Buffers: \$

&

'

&

@

+

#

Infrastructure:

+

~~@Sargidun~~
aa
viaF & e, P & D & D
ug

mP!

- . . /

!

Farmington River 5

(11

! < !

& % > < ~

' !

CA

-

! €Ñàh

- . . 1

'

Farmington River Main Stem

\$

"

#

Mad River B

' (

#

Morgan Brook

< ' (

#

Pe%ua#uck River 9

+

+

<

+ <

+

(!

#

Roaring Brook

+

(!

#

